



3D on the Cheap - the consumer Market Stereo Surge  
DOE CGF 2010

Sam Fulcomer – [sgf@brown.edu](mailto:sgf@brown.edu)



**BROWN UNIVERSITY**  
**CENTER FOR COMPUTATION AND**  
**VISUALIZATION**



# Presentation Outline

- Why stereo?
- Why care about the cheap stuff?
- Review – what we've used at Brown
- The recent explosion in content and products
- ...and what we're doing with it...
- What's around the corner...

# Why stereo?

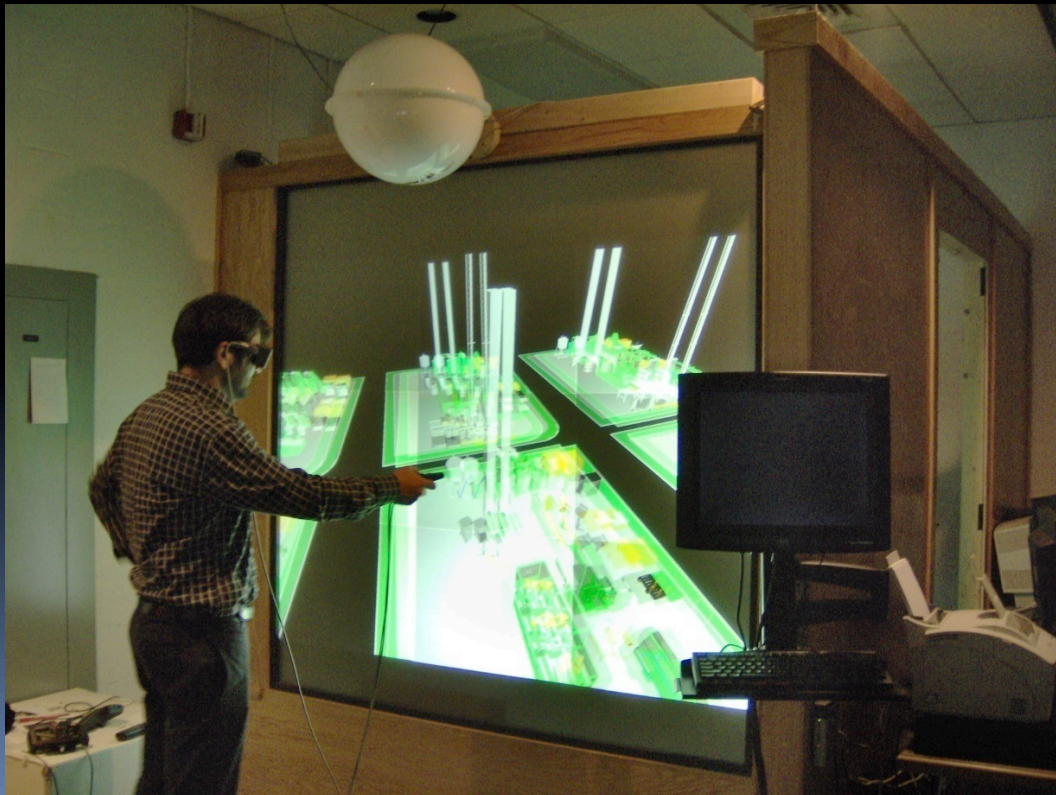
- Perception of spatial relationships in scenes (esp. with high depth complexity)
- Strong enabler of VR
  - Why VR?... another talk...
- Strong enabler of sophisticated UI
  - e.g., Selection/picking in Z (e.g., Prabhat, Forsberg, A., Katzourin, M., Wharton, K., and Slater, M. 2008. A Comparative Study of Desktop, Fishtank, and Cave Systems for the Exploration of Volume Rendered Confocal Data Sets. *IEEE Transactions on Visualization and Computer Graphics* 14, 3 (May. 2008), 551-563. DOI= <http://dx.doi.org/10.1109/TVCG.2007.70433>

# Why care about the low end?

- Graphics cards driven by games since late '90s
  - Volume
  - Competition
  - Rapid innovation
  - Sci-vis, high-end interactive rendering wins...
  - But, no stereo to get excited about (until now)
- Now...
  - Stereo is next big thing in cinema/broadcast
  - Nearly all CE OEMs building stereo-capable displays
  - As with rendering, content is driving product proliferation
  - We win...

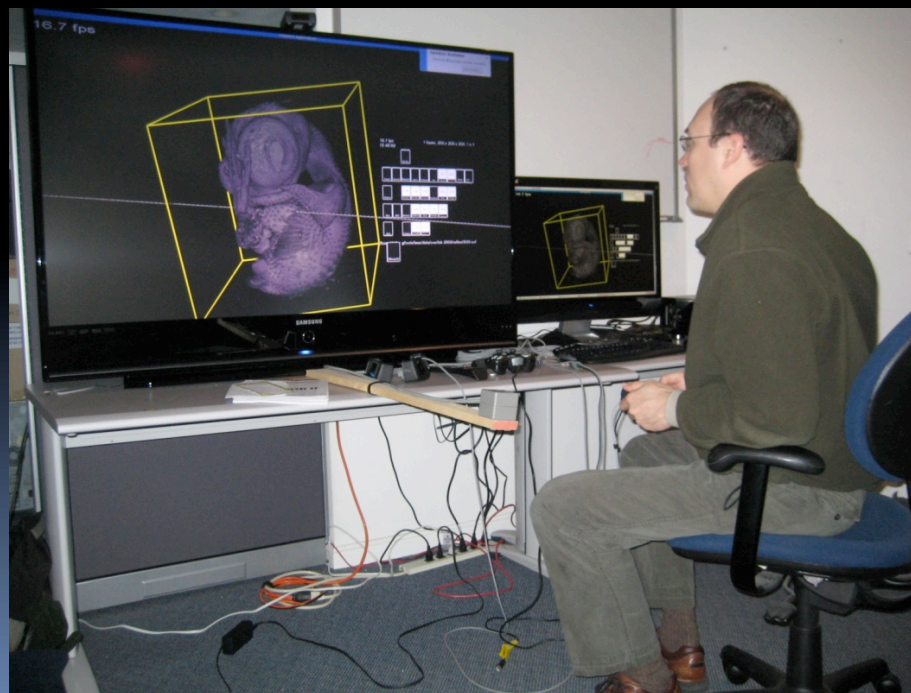
# Review & what we've used...

- DepthQ SVGA DLP (2005-ish)
  - ▣ 800x600 120Hz DVI in, ~\$2k




## ..and what we've used..

- Samsung 3D-DLP projection TV (2007-ish)
  - 1080p, 120Hz, LED lamp, checkerboard stereo
  - Problem: multi-display synch





## ...and more...

- Mitsubishi LaserVue (2009)
    - 1080p, 120Hz, laser light source, checkerboard
    - Laser light transmitted via fiber bundle
    - Problem: laser speckle, limited product life.
    - Mitsubishi disrupts coherence with moving diffuser
    - Rotating a quarter-wave plate could do the same
- 

...until the latest...

- Dell S300 short throw projector (2010)
  - 720p, 120Hz, 5000-hr. lamp, ~\$700, .521 throw ratio, wired or wireless Ethernet
  - Problem: conventional lamp...





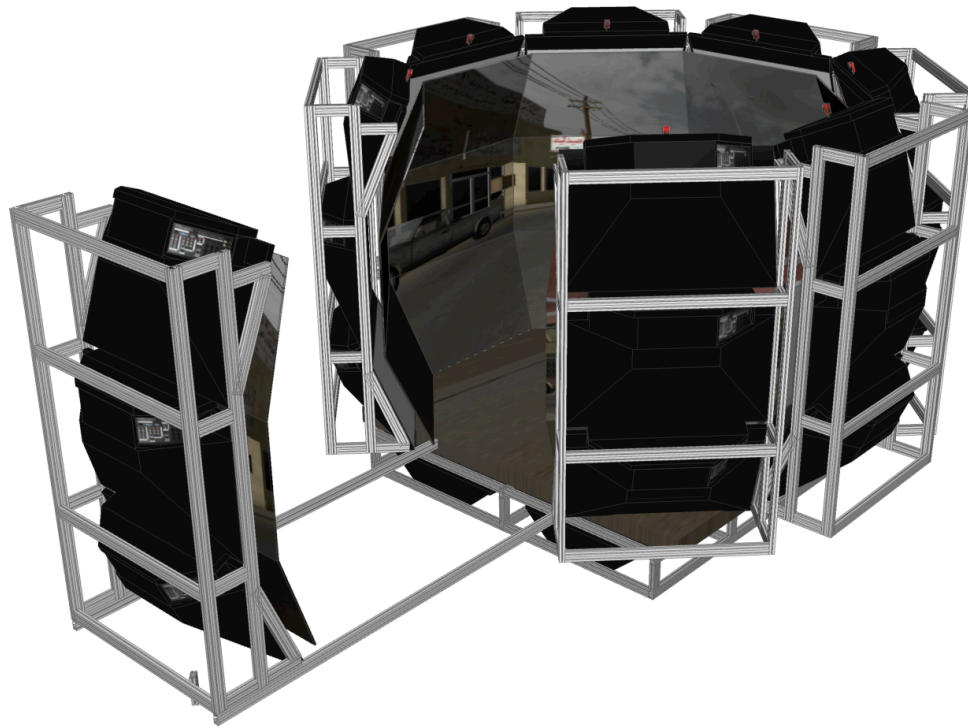
# Tons of stuff available now

- Quadro adapters with USB stereo sync - \$100
- 32 sub-\$1k projectors ([projectorcentral.com](http://projectorcentral.com))
- Comm. Cinema-quality/durability LC glasses (XpandX, the NuVision successor)



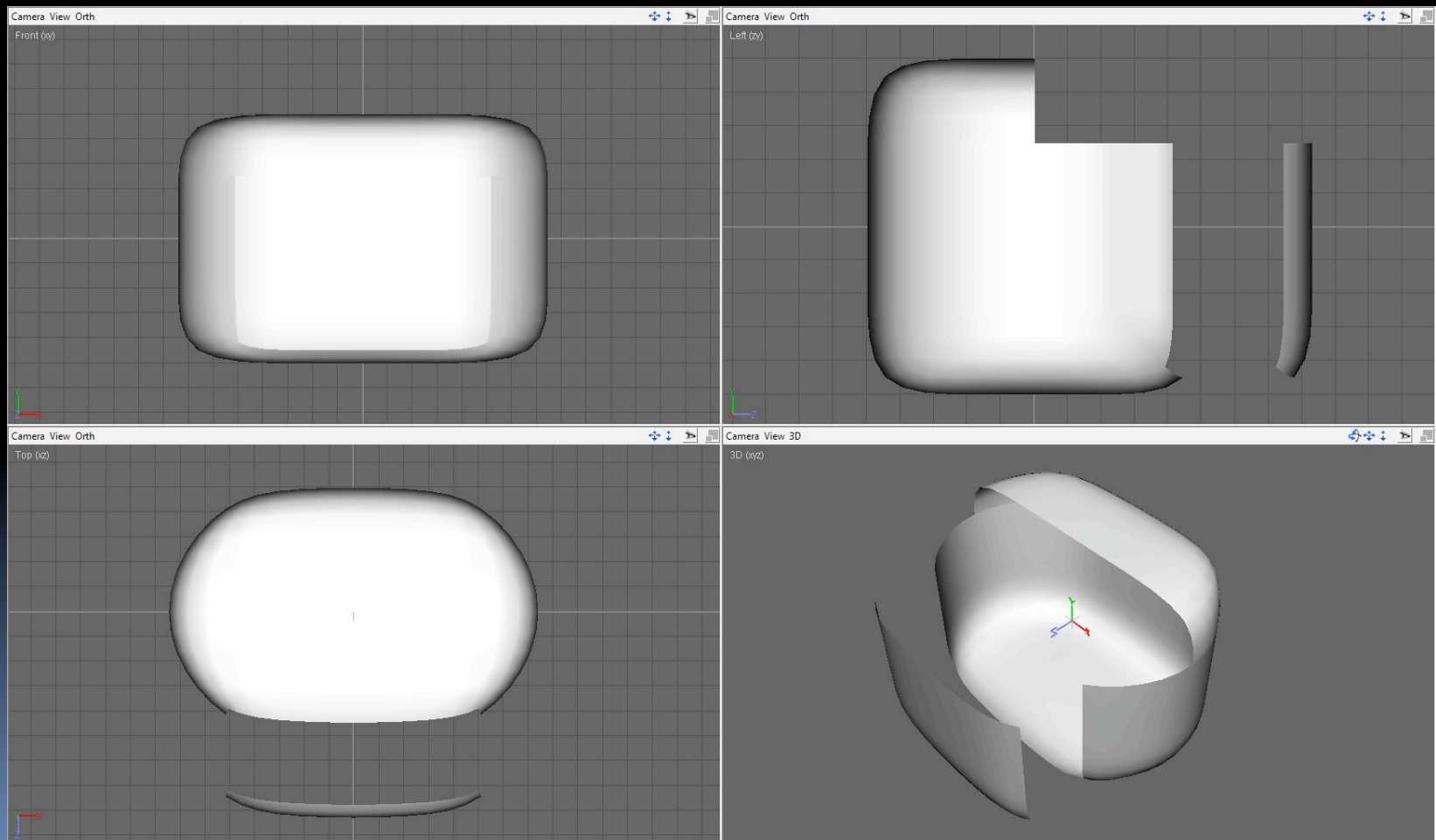
# What we're doing at Brown...

- A new Cave...



# ...what we're doing...

- ...or a new Cave...



...what we're doing...

- ...probably a new treadmill Cave...



...more we're doing...

- 3-panel LCD stereo...





# What's around the corner...

- 4-color light sources... (RGBY LCD's today)
    - ▣ RGBA LEDs soon...
  - LED light-source f-s stereo capable projectors
  - Quad-buffered stereo in DirectX
- 